

PMI OVOC proudly presents

---

# NCPMS 2019



PMI OVOC proudly presents

**NCPMS 2019**

# C3 – Well Managed Risk

Presented By: Caroline Delisle (Colliers),  
Simon Aubin (Ingenium)



# Table of Contents

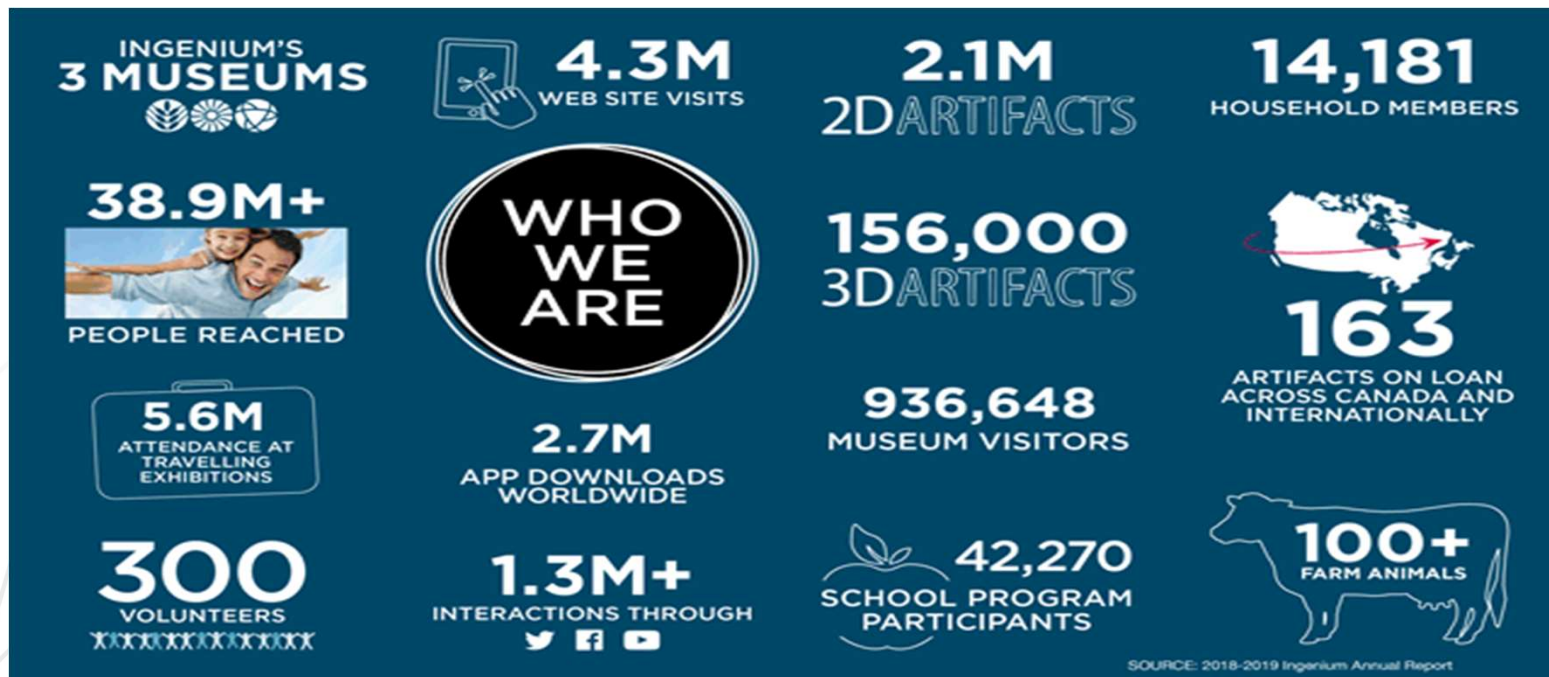
- Introductions
- Project background/summary
- Examples of risks
- 2 specific risks
  - Risk Identification
  - Risk Monitoring
  - Risk Management
- Lesson learned

# Introductions - Simon Aubin

- Executive Director, Facilities and Capitalization
- With Ingenium for 25 years
- In Facility Management 14 years



# Introductions - Ingenium



# Introduction – Caroline Delisle

- Senior Project Manager
- P.Eng., LEED AP, PMP, PMI-SP
- With Colliers Project Leaders for 12 years
- Varied experience – college, university, museums

# Introductions - Colliers

## ABOUT COLLIERS

**Since  
1989**

Started in Ottawa 30 years ago  
by our president

**26**

Offices internationally

**12,000**

Led over 12,000 project

**Leaders. Partner.  
Advocates.**

A project leader is your advocate. We champion your project.  
We prioritize your goals. We treat every client like you  
are our only client.

**Project  
Leadership**

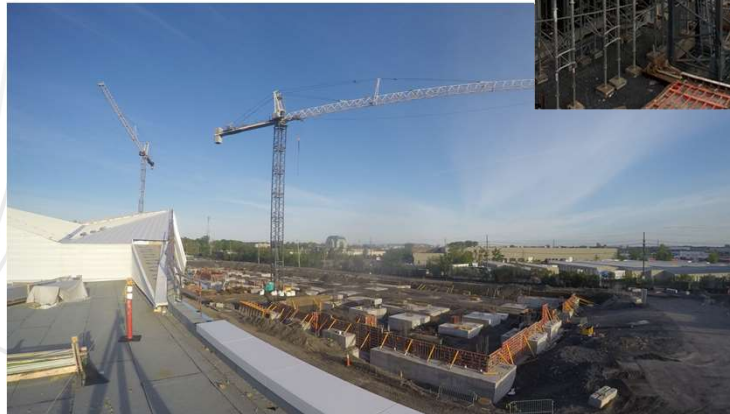
The industry calls it project management.  
We call it project leadership.

# Project Background/Summary

- Collection Conservation Centre
- 34,000 sq.m. facility,
- 4 stories, 31 m high
- Climate controlled storage, labs, offices, restoration workshop, active rail, library,
- Innovation \ A.I. Lab
- 130000 3D and 1.2 million 2D artifacts



# Project Photos



# Project Risks Overview

- Campus program – coordination of multiple projects
- Different users with different requirements
- Physical connection to existing Museum building
- Operational Museum close by
- Design Team lead from out of town
- Moving logistics – large and sensitive artefacts
- Site selection

# Risk Management Process

- Identification (Project plan, workshop)
- Rating / Impact
- Response Plan
- Responsibility Matrix
- Monthly Review Workshops

# Risk Management Tool - Overview

1. Identification
2. Qualitative Analysis
3. Response Planning
4. Residual Risk Analysis
5. Monitoring and Control

# Risk Management Tool - Identification

| Identification            |      |                             |                    |
|---------------------------|------|-----------------------------|--------------------|
| ID Number                 | Risk | Identified Risk Description | Impact Description |
| <b>1. Risk Category 1</b> |      |                             |                    |
|                           |      |                             |                    |
|                           |      |                             |                    |
|                           |      |                             |                    |
|                           |      |                             |                    |

# Risk Management Tool – Qualitative Analysis

| Qualitative Analysis |        |        |
|----------------------|--------|--------|
| Probability          | Impact | Rating |
|                      |        |        |
|                      |        |        |
|                      |        |        |
|                      |        |        |

# Risk Management Tool – Response Planning

| Response Planning        |          |                |
|--------------------------|----------|----------------|
| Risk Management Strategy | Response | Responsibility |
| Accept                   |          |                |
| Avoid                    |          |                |
| Mitigate                 |          |                |
| Transfer                 |          |                |

# Risk Management Tool – Residual Risk Analysis

| Residual Risk Analysis |                             |                                     |                |                               |                     |       |
|------------------------|-----------------------------|-------------------------------------|----------------|-------------------------------|---------------------|-------|
| Probability            | Task Schedule Impact (Days) | Estimated Impact on Schedule (days) | Task Cost (\$) | Estimated Impact on Cost (\$) | Include Contingency | Notes |
| 0%                     |                             |                                     |                |                               | Y                   |       |
| 0%                     |                             |                                     |                |                               | Y                   |       |
| 0%                     |                             |                                     |                |                               | Y                   |       |
| 0%                     |                             |                                     |                |                               | Y                   |       |



# Risk Management Tool – Monitoring & Control

| Monitoring and Control |                    |                    |
|------------------------|--------------------|--------------------|
| Responsibility         | Last Update (Date) | Next Update (Date) |
|                        |                    |                    |
|                        |                    |                    |
|                        |                    |                    |
|                        |                    |                    |

# Detailed Review – Risk 1

- Operational Museum close by
- Background
- What is the risk / impact
- What mitigation measure chosen / why

# Detailed Review – Risk 2

- Physical connection to existing building
- Background
- What is the risk / impact
- What mitigation measure chosen / why

# Questions?

- Floor open to questions
- Feel free to ask in either French or English



# Contact Information

- **Caroline Delisle**  
[caroline.delisle@colliersprojectleaders.com](mailto:caroline.delisle@colliersprojectleaders.com)
- **Simon Aubin**  
[saubin@ingeniumcanada.org](mailto:saubin@ingeniumcanada.org)